

For Sale/Lease  
租/售

**Fully Fitted Seaview Office Sheung Wan - For Sale/Lease**  
上環全裝修海景寫字樓 - 租/售



Property Highlights 物業焦點

- GFA: 3,700 - 7,000 sq.ft. approx..  
建築面積約 3,700 - 7,000 平方呎
- Walking distance to MTR  
鄰近港鐵站
- Open sea view. High floor level  
享開揚海景、高樓層
- Nicely fitted. Readily move-in condition  
全裝修，即時可用

**Rent: From HK\$32 / sq.ft. per month**

租金:每月港幣 \$32 /平方呎起

**Price: From HK\$22,000 /sq.ft.**

售價:港幣 \$22,000 /平方呎起

For identification purpose only  
僅用於識別用途

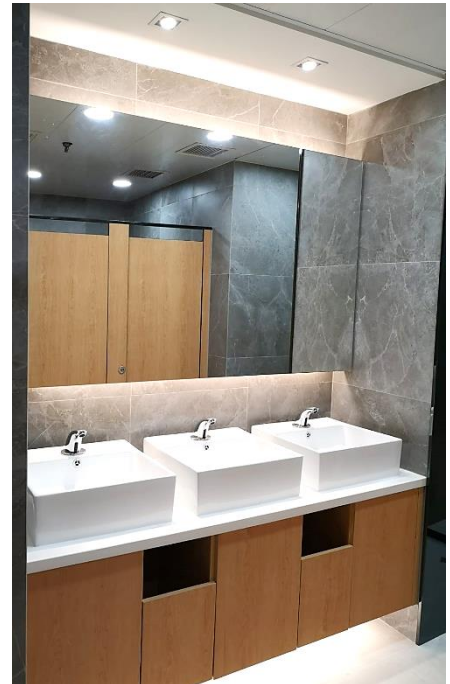
Subject to contract and availability  
一切以合約及可供出租/售為準

**For enquiries and viewing, please contact us below:**

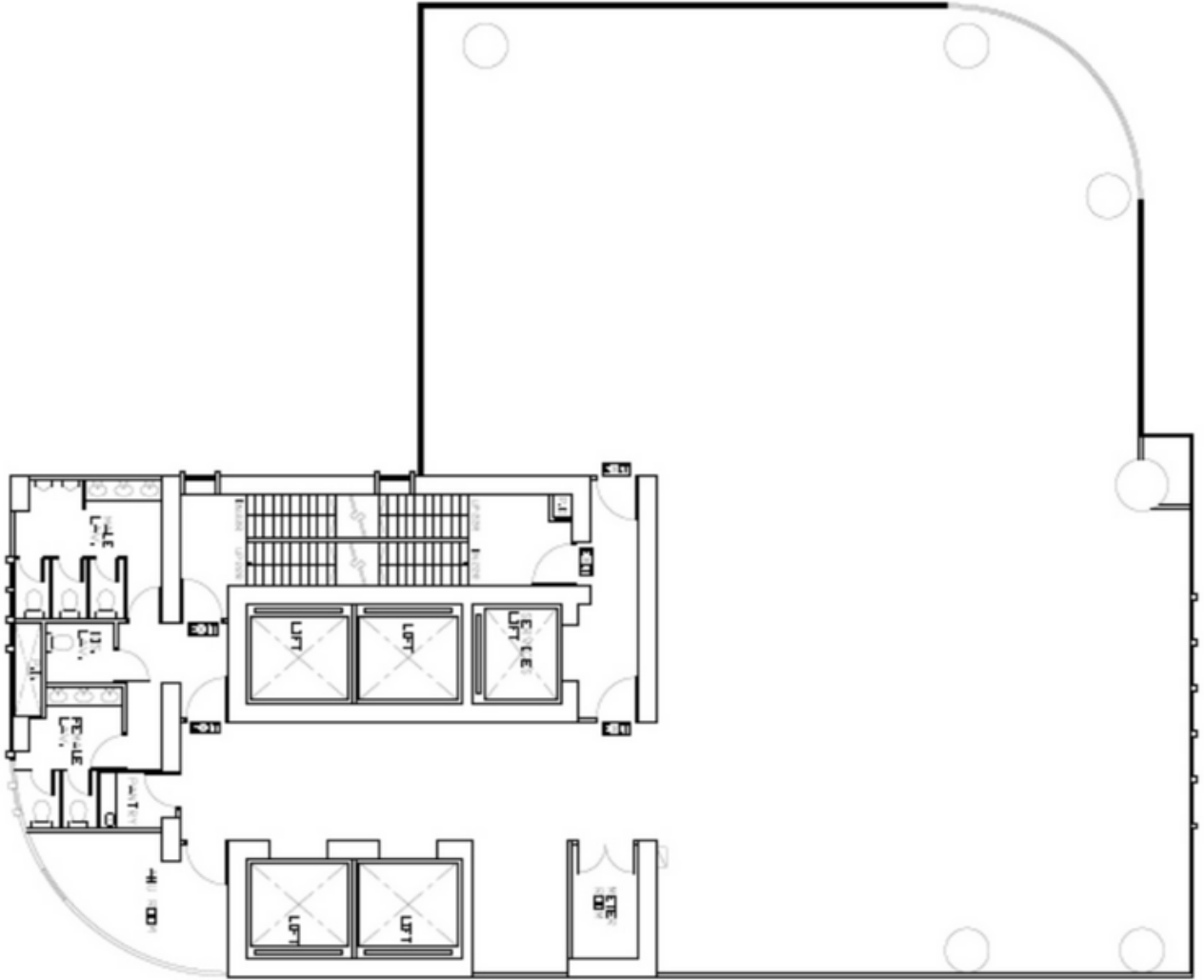
**Ms. Joey Tse** 謝小姐 (S-057031)

+852 2281 7810 | +852 9669 9700

[joey.tse@asiapacificproperties.com](mailto:joey.tse@asiapacificproperties.com)



FLOOR PLAN 平面圖



For identification purpose only  
僅用於識別用途

While every care has been taken in preparing these particulars, Asia Pacific Properties and the respective landlords/vendors give no warranty, express or implied, as to the completeness or accuracy of the information contained herein. These particulars are subject to errors, omissions, change of price/rental or other conditions, withdrawal without notice, and any special listing conditions imposed by our principles. Asia Pacific Properties will not be liable for negligence, or for any direct or indirect consequential losses or damages arising from the use of this information. You should satisfy yourself about the completeness or accuracy of any information or materials. The information contained herein does not form part of an offer or contract.

以上資料來自業主或賣家及其他Asia Pacific Properties 認為可靠的來源。Asia Pacific Properties 對資料的完整和準確性恕不保證、表出或暗示絕對無誤。資料有可能出現租金、售價或其他條件上的改動，或撤回而不經提前通知，並有可能受特別條款約束。因使用此資料而直接或間接引致的損失或損毀，Asia Pacific Properties 恕不負責。客戶應自行確保資料或內容的完整性和準確性。所載資料僅供參考，並不構成要約或合約一部份。

*Copyright © 2020 Asia Pacific Properties. All rights reserved. No part of this information may be reproduced or transmitted in any form or by any means, electronic or mechanical, including photocopying and recording, or by any information storage or retrieval systems without prior permission in writing from Asia Pacific Properties.*

ASIA PACIFIC PROPERTIES LIMITED | 14/F Wilson House, 19-27 Wyndham Place, Central, Hong Kong  
tel +852 2281 7800 | [www.asiapacificproperties.com](http://www.asiapacificproperties.com) EAA License: C-002320