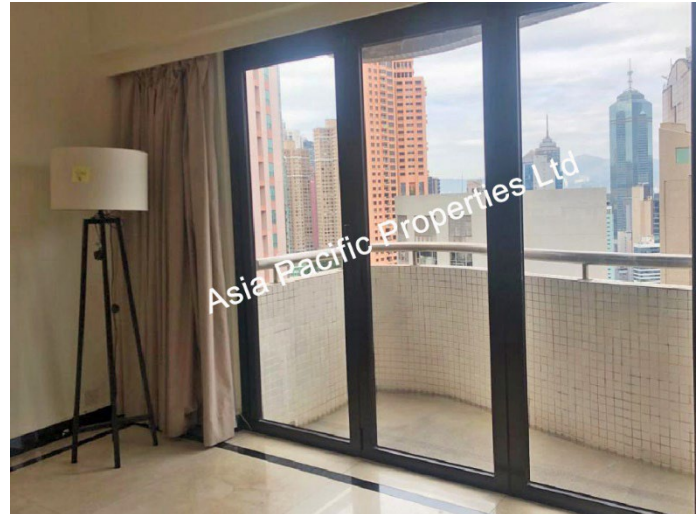


**Co-op Commission Available**

**Sole Agent - Available for Lease  
Wilshire Park**



For identification purpose only  
Subject to contract and availability

**Address:** 12-14 Macdonnell Road  
**Floor Area:** 2,264 sq. ft (Gross) | 1,825 sq.ft (Net)  
**Rent:** **HK\$75,000** inclusive of management fee & rates  
**Particulars:** Spacious 4 bedrooms apartment  
A short walk to HK Park and Admiralty  
Rental includes one car parking space

For further information or viewing, please contact us below

*Yini Jim* (E-179396)

+852 9080 6625 | +852 2281 7837

[yini.jim@appmobility.com](mailto:yini.jim@appmobility.com)

**[www.asiapacificproperties.com](http://www.asiapacificproperties.com)**

ASIA PACIFIC PROPERTIES LTD - EAA License: C-002320  
Headquarters: 14/F Wilson House, 19-27 Wyndham Street, Central, Hong Kong  
t: +852 2281 7800 [www.asiapacificproperties.com](http://www.asiapacificproperties.com)