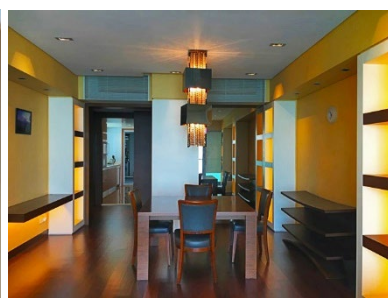
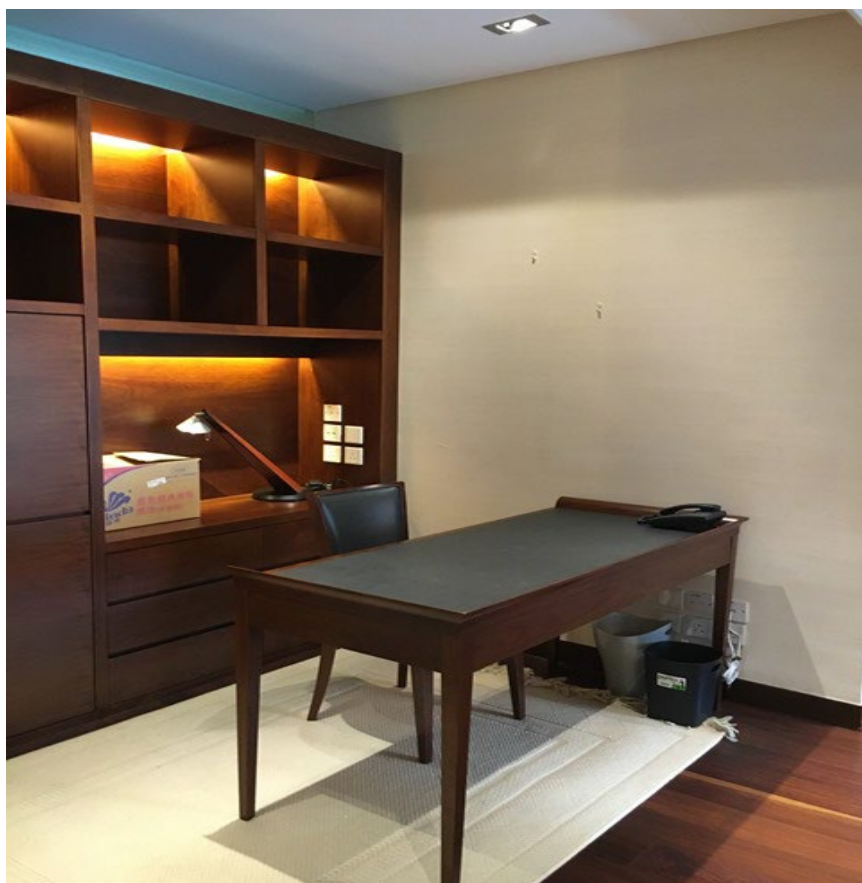


Available for Purchase Bel-Air South Tower – Phase2 Block 3



Address: 38 Bel-Air Avenue, Pokfulam, HK

For identification purpose only
Subject to contract and availability

Floor Area: 1,688 sq.ft (Gross) | 1,366 sq.ft (Net)

Price: HK\$43million inclusive a car parking space

Particulars: Modern internal decoration with balcony
Fully equipped kitchen with maid's quarter
Unique layout with 2 bedrooms, 2 bathrooms and open office area
Partially furnished (optional)

Commission: Commission retained.

For further information or viewing, please contact

Joey Tse (S-570031)

Juliana Tsui (S-094852)

+852 9669 9700 | +852 22817836

+852 93518244 | +852 22817838

joey.tse@asiapacificproperties.com

juliana.tsui@appmobility.com

ASIA PACIFIC PROPERTIES LTD - EAA License: C-002320

APP MOBILITY - EAA License: C-062214

Headquarters: 14/F Wilson House, 19-27 Wyndham Street, Central, Hong Kong |

t: +852 2281 7800 www.asiapacificproperties.com

Copyright ©2021 Asia Pacific Properties Ltd. All rights reserved.

The information contained herein has been given to Asia Pacific Properties by the owner of the property or other sources we deem reliable. While every effort has been made to prepare the information herein, accuracy cannot be guaranteed. No representation or warranty whatsoever is made in particulars, during negotiations or elsewhere. You should satisfy yourself about the completeness or accuracy of any information or materials.

We value your privacy and will only use your information in accordance with our [privacy policy](#).

To unsubscribe, please click [here](#)